

# Briv<sup>®</sup> 1801

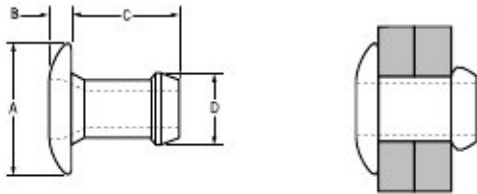


For installation information please refer to the tooling overview and manuals on our website [www.avdel-global.com](http://www.avdel-global.com).  
 Pour les conditions de pose, merci de vous référer à la description de l'outil et aux manuels disponibles sur notre site Web.  
 Angaben zur Verarbeitung entnehmen Sie bitte der Geräteübersicht und den Betriebsanleitungen auf unserer Website.  
 Per informazioni sull'installazione preghiamo consultare i manuali e la panoramica degli attrezzi sul nostro sito web.  
 Para ver información sobre máquinas de colocación, consulte nuestra página web, apartados visión general de máquinas y manuales.

English	Français	Deutsch	Italiano	Español
Dome head	Tête plate	Flachrundkopf	Testa tonda	Cabeza alomada
Aluminium alloy* (5 % Mg) Natural	Alliage d'aluminium* (5% Mg) Brut	Aluminium* (5 % Mg) Blank	Lega di alluminio* (5% Mg) Nessuna finitura	Aluminio* (5% Mg) Natural

\*: BS 1473 5056A DIN 1725 AlMg5 Werkstoff 3.3555

Option: for 2.5 % Mg aluminium alloy replace part no. 01801 with 01861 / pour 2.5 % Mg alliage d'aluminium remplacer la série 01801 par 01861 / für 2.5 % Mg Aluminium-Legierung ersetzen Sie 01801 durch 01861 / per 2.5 % Mg lega di alluminio sostituire 01801 con 01861 / con Aluminio (2,5 % de Mg) cambiar 01801 por 01861



nom.	Ø		Drill		A	B	C	D	kN <sup>1)</sup>	kN <sup>1)</sup>	Fasteners per pod / Nombre de rivets par chargeur / Niete pro Magazin / Rivetti per caricatore / Uds./carga ± 1	Part No/ref
	min.	max.	min.	max.	± 0.4	max.	max.	max.				
2.4 (3/32")	1.14	2.42	2.36	2.44	3.9	0.89	3.98	2.35	0.2	0.4	64	01801-00304
	2.15	3.43					5.00				52	01801-00306
	3.17	4.45					6.02				44	01801-00308
	4.19	5.47					7.04				38	01801-00310
	5.20	6.48					8.05				34	01801-00312
	6.22	7.50					9.07				30	01801-00314
	6.73	8.00					9.57				28	01801-00315
	7.24	8.51					10.08				27	01801-00316
	7.75	9.02					10.59				26	01801-00317
3.2 (1/8")	0.64	1.91	3.26	3.34	6.2	0.99	3.86	3.14	0.7	1.3	59	01801-00403
	1.14	2.42					4.37				58	01801-00404
	1.65	2.87					4.87				50	01801-00405
	2.15	3.43					5.39				48	01801-00406
	3.17	4.45					6.41				42	01801-00408
	4.19	5.47					7.42				37	01801-00410
	5.20	6.48					8.44				33	01801-00412
	6.22	7.50					9.45				29	01801-00414
	7.24	8.51					10.46				26	01801-00416

all dimensions in mm / en millimètres / alle Maße in mm / in millimetri / en milímetros

1) typical values / valeurs moyennes / typische Werte / Valori tipici / resistencias máximas recomen

**Avdel - Partner seit 1986**



An Acument™ Global Technologies Company





[www.avdel-global.com](http://www.avdel-global.com)

Briv<sup>®</sup> is a trademark of Avdel UK Limited

06a.2007, page 1/2

Data shown is subject to change without prior notice as a result of continuous product development and improvement policy.  
 Your local Avdel representative is at your disposal should you need to confirm latest information.

# Briv® 1801

Ø					A	B	C	D			Fasteners per pod / Nombre de rivets par chargeur / Niete pro Magazin / Italiano / Uds./carga ± 1	Part No/ref
	min.	max.	min.	max.	± 0.4	max.	max.	max.	kN <sup>1)</sup>	kN <sup>1)</sup>		
4.0 (5/32")	1.57	2.93	3.97	4.04	7.9	0.99	4.91	3.88	1.1	1.7	52	01801-00505
	2.15	3.43					5.41				49	01801-00506
	2.66	3.94					5.92				44	01801-00507
	3.68	4.96					6.94				39	01801-00509
	4.69	5.97					7.95				34	01801-00511
	5.71	6.99					8.97				31	01801-00513
	6.73	8.00					9.98				26	01801-00515
	7.75	9.02					11.00				24	01801-00517
4.8 (3/16")	1.65	3.30	4.85	4.93	9.4	1.17	5.39	4.77	1.5	2.7	46	01801-00606
	2.03	3.94					6.10				42	01801-00607
	3.68	5.21					7.37				35	01801-00609
	4.95	6.48					8.64				31	01801-00611
	6.22	7.75					9.91				27	01801-00613
	7.49	9.02					11.18				24	01801-00615
	8.76	10.29					12.45				22	01801-00617
	10.03	11.56					13.46				20	01801-00619
6.0	2.66	3.94	5.94	6.02	11.3	1.35	6.93	5.93	1.6	3.2	37	01801-06007
	3.68	4.95					7.94				33	01801-06009
	4.70	5.96					8.96				29	01801-06011
	5.71	6.98					9.98				26	01801-06013
	6.73	7.99					10.99				24	01801-06015
	7.74	9.01					12.00				23	01801-06017

all dimensions in mm / en millimètres / alle Maße in mm / in millimetri / en milímetros

1) typical values / valeurs moyennes / typische Werte / Valori tipici / resistencias máximas recomendadas

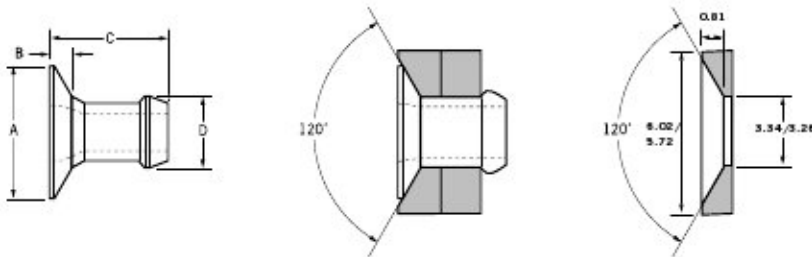
# Briv<sup>®</sup> 1802



For installation information please refer to the tooling overview and manuals on our website [www.avdel-global.com](http://www.avdel-global.com).  
 Pour les conditions de pose, merci de vous référer à la description de l'outil et aux manuels disponibles sur notre site Web.  
 Angaben zur Verarbeitung entnehmen Sie bitte der Geräteübersicht und den Betriebsanleitungen auf unserer Website.  
 Per informazioni sull'installazione preghiamo consultare i manuali e la panoramica degli attrezzi sul nostro sito web.  
 Para ver información sobre máquinas de colocación, consulte nuestra página web, apartados visión general de máquinas y manuales.

English	Français	Deutsch	Italiano	Español
120° Countersunk	120° Tête fraisée	120° Senkkopf	120° Testa svasata	120° Cabeza avellanada
Aluminium alloy* (5 % Mg) Natural	Alliage d'aluminium* (5% Mg) Brut	Aluminium* (5 % Mg) Blank	Lega di alluminio* (5% Mg) Nessuna finitura	Aluminio* (5% Mg) Natural

\*: BS 1473 5056A DIN 1725 AlMg5 Werkstoff 3.3555



Rec. c/sunk hole dimensions (ø 3.2 mm only)  
 Dimensions recommandées du trou fraisé (3.2 mm seulement)  
 Empf. Abmessungen für Senkloch (nur ø 3.2 mm)  
 Dimensioni raccomandate del foro svasato (solo 3.2).  
 Dimensiones del taladro avellanado recomendadas (solo 3.2)

ø	min.   max.		min.   max.		± 0.5	max.	max.	max.	kN <sup>1)</sup>	kN <sup>1)</sup>	Fasteners per pod / Nombre de rivets par chargeur / Niete pro Magazin / Rivetti per caricatore / Uds./carga ± 1	Part No/ref
	nom.	min.	max.	min.								
3.2 (1/8")	1.52	2.79	3.26	3.34	5.5	0.89	4.77	3.17	0.7	1.3	64	01802-00406
	2.54	3.81					5.79				52	01802-00407
	3.56	4.83					6.81				44	01802-00408
	4.57	5.84					7.82				38	01802-00410
	5.59	6.86					8.84				33	01802-00411
4.0 (5/32")	1.57	2.93	3.97	4.04	6.5	1.02	5.18	3.90	1.1	1.7	59	01802-00505
	2.15	3.43					5.69				54	01802-00506
	2.66	3.94					6.19				49	01802-00507
	3.68	4.96					7.21				42	01802-00509
	4.69	5.97					8.22				36	01802-00511
	5.71	6.99					9.24				32	01802-00513

all dimensions in mm / en millimètres / alle Maße in mm / in millimetri / en milímetros

1) typical values / valeurs moyennes / typische Werte / Valori tipici / resistencias máximas recomendadas



An Acument™ Global Technologies Company

[www.avdel-global.com](http://www.avdel-global.com)

Briv<sup>®</sup> is a trademark of Avdel UK Limited

Data shown is subject to change without prior notice as a result of continuous product development and improvement policy.  
 Your local Avdel representative is at your disposal should you need to confirm latest information.

Avdel - Partner seit 1986



© 2007 Acument Intellectual Properties, LLC

02a.2007

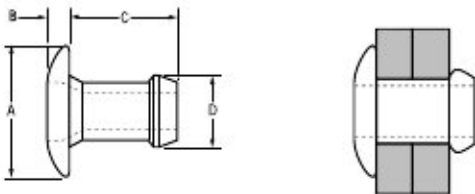
# Briv<sup>®</sup> 1821



For installation information please refer to the tooling overview and manuals on our website [www.avdel-global.com](http://www.avdel-global.com).  
 Pour les conditions de pose, merci de vous référer à la description de l'outil et aux manuels disponibles sur notre site Web.  
 Angaben zur Verarbeitung entnehmen Sie bitte der Geräteübersicht und den Betriebsanleitungen auf unserer Website.  
 Per informazioni sull'installazione preghiamo consultare i manuali e la panoramica degli attrezzi sul nostro sito web.  
 Para ver información sobre máquinas de colocación, consulte nuestra página web, apartados visión general de máquinas y manuales.

English	Français	Deutsch	Italiano	Español
Dome head	Tête plate	Flachrundkopf	Testa tonda	Cabeza alomada
Low carbon steel*	Acier bas carbone*	Stahl*	Acciaio a basso tenore di carbonio*	Acero bajo en carbono*
Zinc plated	Revêtement zingué	Verzinkt	Zincato	Zincado
Clear trivalent passivated	Passivation claire trivalente	Klar chromatiert, Cr6-frei	Passivazione chiara trivalente	Pasivado claro trivalente

\*: SAE 1008 / EN 10263-2 C8C (DIN 10263-2 C8C, Qst 34-3)



nom.	Ø		Drill		A	B	C	D	kN <sup>1)</sup>	kN <sup>1)</sup>	Fasteners per pod / Nombre de rivets par chargeur / Niete pro Magazin / Rivetti per caricatore / Uds./carga ± 1	Part No/ref
	min.	max.	min.	max.	± 0.4	max.	max.	max.				
3.2 (1/8")	0.64	1.91	3.26	3.34	6.2	0.99	3.86	3.16	1.1	1.8	59	01821-00403
	1.14	2.42					4.37				58	01821-00404
	1.65	2.87					4.87				50	01821-00405
	2.15	3.43					5.39				48	01821-00406
	3.17	4.45					6.41				42	01821-00408
	4.19	5.47					7.42				37	01821-00410
	5.20	6.48					8.44				33	01821-00412
	6.22	7.50					9.45				29	01821-00414
	7.24	8.51					10.46				26	01821-00416
4.0 (5/32")	1.57	2.93	3.97	4.04	7.9	0.99	4.91	3.90	1.6	2.8	52	01821-00505
	2.15	3.43					5.41				49	01821-00506
	2.66	3.94					5.92				44	01821-00507
	3.68	4.96					6.94				39	01821-00509
	4.69	5.97					7.95				34	01821-00511
	5.71	6.99					8.97				31	01821-00513
	6.73	8.00					9.98				26	01821-00515
	7.75	9.02					11.00				24	01821-00517

all dimensions in mm / en millimètres / alle Maße in mm / in millimetri / en milímetros

1) typical values / valeurs moyennes / typische Werte / Valori tipici / resistencias máximas recomen **Avdel - Partner seit 1986**



An Acument™ Global Technologies Company

[www.avdel-global.com](http://www.avdel-global.com)





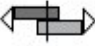

© 2007 Acument Intellectual Properties, LLC

Briv<sup>®</sup> is a trademark of Avdel UK Limited

04.2008, page 1/2

Data shown is subject to change without prior notice as a result of continuous product development and improvement policy.  
 Your local Avdel representative is at your disposal should you need to confirm latest information.

# Briv® 1821

Ø					A	B	C	D			Fasteners per pod / Nombre de rivets par chargeur / Niete pro Magazin / Rivetti per caricatore / Uds./carga ± 1	Part No/ref
	min.	max.	min.	max.	± 0.4	max.	max.	max.	kN <sup>1)</sup>	kN <sup>1)</sup>		
4.8 (3/16")	1.65	3.30	4.85	4.93	9.4	1.17	5.39	4.79	2.2	3.7	46	01821-00606
	2.03	3.94					6.10				42	01821-00607
	3.68	5.21					7.37				35	01821-00609
	4.95	6.48					8.64				31	01821-00611
	6.22	7.75					9.91				27	01821-00613
	7.49	9.02					11.18				24	01821-00615
	8.76	10.29					12.45				22	01821-00617
6.0	2.66	3.94	5.94	6.02	11.3	1.35	6.93	5.93	2.5	4.2	37	01821-06007
	3.68	4.95					7.94				33	01821-06009
	4.70	5.96					8.96				29	01821-06011
	5.71	6.98					9.98				26	01821-06013
	6.73	7.99					10.99				24	01821-06015
	7.74	9.01					12.00				23	01821-06017

all dimensions in mm / en millimètres / alle Maße in mm / in millimetri / en milímetros

1) typical values / valeurs moyennes / typische Werte / Valori tipici / resistencias máximas recomendadas

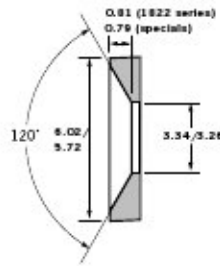
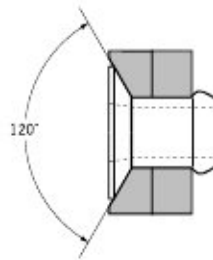
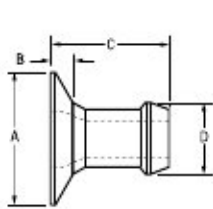
# Briv<sup>®</sup> 1822



For installation information please refer to the tooling overview and manuals on our website [www.avdel-global.com](http://www.avdel-global.com).  
 Pour les conditions de pose, merci de vous référer à la description de l'outil et aux manuels disponibles sur notre site Web.  
 Angaben zur Verarbeitung entnehmen Sie bitte der Geräteübersicht und den Betriebsanleitungen auf unserer Website.  
 Per informazioni sull'installazione preghiamo consultare i manuali e la panoramica degli attrezzi sul nostro sito web.  
 Para ver información sobre máquinas de colocación, consulte nuestra página web, apartados visión general de máquinas y manuales.

English	Français	Deutsch	Italiano	Español
120° Countersunk	120° Tête fraisée	120° Senkkopf	120° Testa svasata	120° Cabeza avellanada
Low carbon steel*	Acier bas carbone*	Stahl*	Acciaio a basso tenore di carbonio*	Acero bajo en carbono*
Zinc plated	Revêtement zingué	Verzinkt	Zincato	Zincado
Clear trivalent passivated	Passivation claire trivalente	Klar chromatiert, Cr6-frei	Passivazione chiara trivalente	Pasivado claro trivalente

\*: SAE 1008 / EN 10263-2 C8C (DIN 10263-2 C8C, Qst 34-3)



Rec. c / sunk hole dimensions (ø 3.2 mm only)  
 Dimensions recommandées du trou fraisé (3,2 mm seulement)  
 Empf. Abmessungen für Senkloch (nur ø 3,2 mm)  
 Dimensioni raccomandate del foro svasato (solo 3,2).  
 Dimensiones del taladro avellanado recomendadas (solo 3,2)

ø	A		B		C	D	kN <sup>1)</sup>	kN <sup>1)</sup>	Fasteners per pod / Nombre de rivets par chargeur / Niete pro Magazin / Rivetti per caricatore / Uds./carga	Part No/ref	
	nom.	min.	max.	min.							max.
3.2 (1/8")	1.52	2.79	3.26	3.34	5.5	0.76	3.17	0.9	1.6	64	01822-00406
	2.54	3.81								52	01822-00407
	3.56	4.83								44	01822-00408
	4.57	5.84								38	01822-00410
	5.59	6.86								33	01822-00411
4,0 (5/32")	1.57	2.93	3.97	4.04	6.5	1.02	3.90	1.6	2.8	59	01822-00505
	2.15	3.43								54	01822-00506
	2.66	3.94								49	01822-00507
	3.68	4.96								42	01822-00509
	4.69	5.97								36	01822-00511
	5.71	6.99								32	01822-00513

Special Option: designed for thin sheet applications / Conçu pour des applications de faible épaisseur / für geringe Materialstärken / Progettato per applicazioni in spessori sottili / Diseñado para aplicaciones de chapa fina

3.2 (1/8")	1.27	2.29	3.26	3.34	5.5	0.74	4.32	3.17	0.9	1.6	72	01810-06480
	1.45	1.70				0.69	4.19				72	01810-10375

all dimensions in mm / en millimètres / alle Maße in mm / in millimetri / en milímetros

1) typical values / valeurs moyennes / typische Werte / Valori tipici / resistencias máximas recomen **Avdel - Partner seit 1986**



An Acument™ Global Technologies Company

[www.avdel-global.com](http://www.avdel-global.com)

Briv<sup>®</sup> is a trademark of Avdel UK Limited

Data shown is subject to change without prior notice as a result of continuous product development and improvement policy.  
 Your local Avdel representative is at your disposal should you need to confirm latest information.

04.2008



© 2007 Acument Intellectual Properties, LLC

# Briv<sup>®</sup> 1833



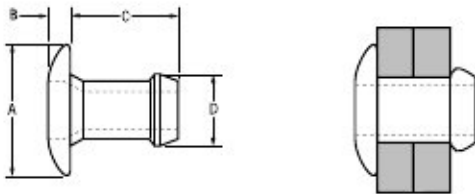
For installation information please refer to the tooling overview and manuals on our website [www.avdel-global.com](http://www.avdel-global.com).  
 Pour les conditions de pose, merci de vous référer à la description de l'outil et aux manuels disponibles sur notre site Web.  
 Angaben zur Verarbeitung entnehmen Sie bitte der Geräteübersicht und den Betriebsanleitungen auf unserer Website.  
 Per informazioni sull'installazione preghiamo consultare i manuali e la panoramica degli attrezzi sul nostro sito web.  
 Para ver información sobre máquinas de colocación, consulte nuestra página web, apartados visión general de máquinas y manuales.

English	Français	Deutsch	Italiano	Español
Dome head	Tête plate	Flachrundkopf	Testa tonda	Cabeza alomada
Brass* Electro tin plated	Laiton* Etamage électrolytique	Kupfer-Zink Legierung* verzinkt	Ottone* Stagnato	Latón* Estañado electrolítico

\*: BS EN 12166 CW 508L DIN 17660 CuZn37

### Option:

For brightened Brass finish replace 01833 with 01831 / Pour finition brillante remplacer la série 01833 par 01831 / Für Oberfläche blank ersetzen Sie 01833 durch 01831 / Per finitura brillante sostituire 01833 con 01831 / Con acabado brillante cambiar 01833 por 01831



nom.	Ø		Drill		A	B	C	D	kN <sup>1)</sup>	kN <sup>1)</sup>	Fasteners per pod / Nombre de rivets par chargeur / Niete pro Magazin / Rivetti per caricatore / Uds./carga ± 1	Part No/ref
	min.	max.	min.	max.	max.	max.	max.	max.				
2.4 (3/32")	1.14	2.42	2.36	2.44	4.2	0.89	3.99	2.35	0.44	0.89	64	01833-00304
	2.15	3.43					5.01				52	01833-00306
	3.17	4.45					6.02				44	01833-00308
	4.19	5.47					7.04				38	01833-00310
	5.20	6.48					8.06				34	01833-00312
	6.22	7.50					9.07				30	01833-00314
	6.73	8.00					9.57				28	01833-00315
	7.24	8.51					10.08				27	01833-00316
	7.75	9.02					10.59				26	01833-00317
3.2 (1/8")	0.64	1.91	3.26	3.34	6.6	0.99	3.86	3.16	1.11	1.91	64	01833-00403
	1.14	2.42					4.37				58	01833-00404
	2.15	3.43					5.39				50	01833-00406
	3.17	4.45					6.41				42	01833-00408
	4.19	5.47					7.42				37	01833-00410
	5.20	6.48					8.44				33	01833-00412
	6.22	7.50					9.45				29	01833-00414
	7.24	8.51					10.46				26	01833-00416

all dimensions in mm / en millimètres / alle Maße in mm / in millimetri / en milímetros

1) typical values / valeurs moyennes / typische Werte / Valori tipici / resistencias máximas recomen **Avdel - Partner seit 1986**



An Acument™ Global Technologies Company

[www.avdel-global.com](http://www.avdel-global.com)





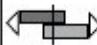

© 2007 Acument Intellectual Properties, LLC

Briv<sup>®</sup> is a trademark of Avdel UK Limited

02a.2007, page 1/2

Data shown is subject to change without prior notice as a result of continuous product development and improvement policy.  
 Your local Avdel representative is at your disposal should you need to confirm latest information.

# Briv® 1833

ø					A	B	C	D			Fasteners per pod / Nombre de rivets par chargeur / Niete pro Magazin / Rivetti per caricatore / Uds./carga ± 1	Part No/ref
	nom.	min.	max.	min.								
4.0 (5/32")	1.57	2.93	3.97	4.04	8.2	0.99	4.91	3.90	1.87	2.75	52	01833-00505
	2.15	3.43					5.41				48	01833-00506
	2.66	3.94					5.92				44	01833-00507
	3.68	4.96					6.94				38	01833-00509
	4.69	5.97					7.95				34	01833-00511
	5.71	6.99					8.97				30	01833-00513
	6.73	8.00					9.98				27	01833-00515
	7.75	9.02					11.00				25	01833-00517
4.8 (3/16")	1.65	3.30	4.85	4.93	9.8	1.17	5.39	4.79	2.31	3.60	46	01833-00606
	2.03	3.94					6.10				42	01833-00607
	3.68	5.21					7.37				35	01833-00609
	4.95	6.48					8.64				31	01833-00611
	6.22	7.75					9.91				27	01833-00613
	7.49	9.02					11.18				24	01833-00615
	8.76	10.29					12.45				22	01833-00617
	10.03	11.56					13.46				20	01833-00619

all dimensions in mm / en millimètres / alle Maße in mm / in millimetri / en milímetros

1) typical values / valeurs moyennes / typische Werte / Valori tipici / resistencias máximas recomendadas



An Acument™ Global Technologies Company

www.avdel-global.com

Briv® is a trademark of Avdel UK Limited

Avdel - Partner seit 1986



© 2007 Acument Intellectual Properties, LLC

02a.2007, page 2/2

Data shown is subject to change without prior notice as a result of continuous product development and improvement policy.  
Your local Avdel representative is at your disposal should you need to confirm latest information.



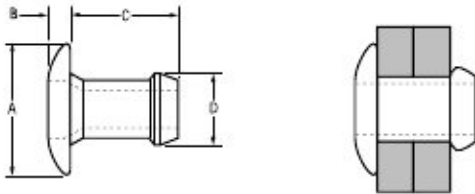
# Briv<sup>®</sup> 1841



For installation information please refer to the tooling overview and manuals on our website [www.avdel-global.com](http://www.avdel-global.com).  
 Pour les conditions de pose, merci de vous référer à la description de l'outil et aux manuels disponibles sur notre site Web.  
 Angaben zur Verarbeitung entnehmen Sie bitte der Geräteübersicht und den Betriebsanleitungen auf unserer Website.  
 Per informazioni sull'installazione preghiamo consultare i manuali e la panoramica degli attrezzi sul nostro sito web.  
 Para ver información sobre máquinas de colocación, consulte nuestra página web, apartados visión general de máquinas y manuales.

English	Français	Deutsch	Italiano	Español
Dome head	Tête plate	Flachrundkopf	Testa tonda	Cabeza alomada
Austenitic stainless steel*	Inox austénitique*	Edelstahl*	Acciaio inox austenitico*	Acero inoxidable austenítico*
Polished	Poli	Blank	Lucido	Pulido

\*: BS 3111 394S17 Werkstoff 1.4567



nom.	Ø		Drill		A	B	C	D	kN <sup>1)</sup>	kN <sup>1)</sup>	Fasteners per pod / Nombre de rivets par chargeur / Niete pro Magazin / Rivetti per caricatore / Uds./carga ± 1	Part No/ref
	min.	max.	min.	max.	± 0.4	max.	max.	max.				
3.2 (1/8")	1.14	2.42	3.27	3.34	6.2	0.99	4.37	3.16	1.3	2.0	58	01841-00404
	2.15	3.43					5.39				50	01841-00406
	3.17	4.45					6.41				42	01841-00408
	4.19	5.47					7.42				37	01841-00410
	5.20	6.48					8.44				33	01841-00412
4.0 (5/32")	1.57	2.93	3.97	4.04	7.9	0.99	4.91	3.87	2.4	3.5	52	01841-00505
	2.66	3.94					5.92				44	01841-00507
	3.68	4.96					6.94				38	01841-00509
	4.69	5.97					7.95				34	01841-00511
	5.71	6.99					8.97				30	01841-00513
4.8 (3/16")	2.03	3.94	4.85	4.93	9.4	1.17	6.10	4.77	3.5	5.1	42	01841-00607
	3.68	5.21					7.37				35	01841-00609
	4.32	5.84					8.00				32	01841-00610
	4.95	6.48					8.64				31	01841-00611
	6.22	7.75					9.91				27	01841-00613
	7.49	9.02					11.18				24	01841-00615

all dimensions in mm / en millimètres / alle Maße in mm / in millimetri / en milímetros

1) typical values / valeurs moyennes / typische Werte / Valori tipici / resistencias máximas recomendadas

**Avdel - Partner seit 1986**



An Acument™ Global Technologies Company

[www.avdel-global.com](http://www.avdel-global.com)

© 2007 Acument Intellectual Properties, LLC

Briv<sup>®</sup> is a trademark of Avdel UK Limited

02a.2007

Data shown is subject to change without prior notice as a result of continuous product development and improvement policy.  
 Your local Avdel representative is at your disposal should you need to confirm latest information.